

Cynomolgus IL-23R Protein



Cat. No. ILR-CM123

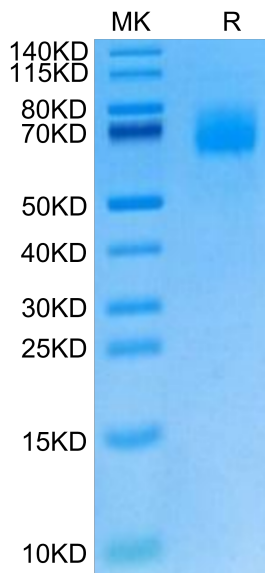
Description	
Source	Recombinant Cynomolgus IL-23R Protein is expressed from HEK293 with His tag at the C-Terminus. It contains Gly24-Asp353.
Accession	G7NWWY5
Molecular Weight	The protein has a predicted MW of 39.03 kDa. Due to glycosylation, the protein migrates to 60-80 kDa based on Bis-Tris PAGE result.
Endotoxin	Less than 1 EU per µg by the LAL method.
Purity	> 95% as determined by Bis-Tris PAGE > 95% as determined by HPLC

Formulation and Storage	
Formulation	Lyophilized from 0.22µm filtered solution in PBS (pH 7.4). Normally 8% trehalose is added as protectant before lyophilization.
Reconstitution	Dissolve the lyophilized protein in distilled water. Please refer to the Certificate of Analysis for detailed instructions.
Storage	-20 to -80°C for 12 months as supplied from date of receipt. -80°C for 3 months after reconstitution. Recommend to aliquot the protein into smaller quantities for optimal storage. Please minimize freeze-thaw cycles.

Background	
Interleukin-23 (IL-23), a member of the IL-12 family of cytokines, is a heterodimeric cytokine. It is composed of subunits p40 (shared with IL-12) and p19 (an IL-12 p35-related subunit) and is secreted by several types of immune cells, such as natural killer cells and dendritic cells. The IL-23 receptor is composed of the subunit IL-12Rβ1 and the IL-23-specific subunit IL-23R. The binding of IL-23 to its specific cell surface receptor regulates a number of functions, including proliferation and differentiation of cells and secretion of cell factors.	

Assay Data

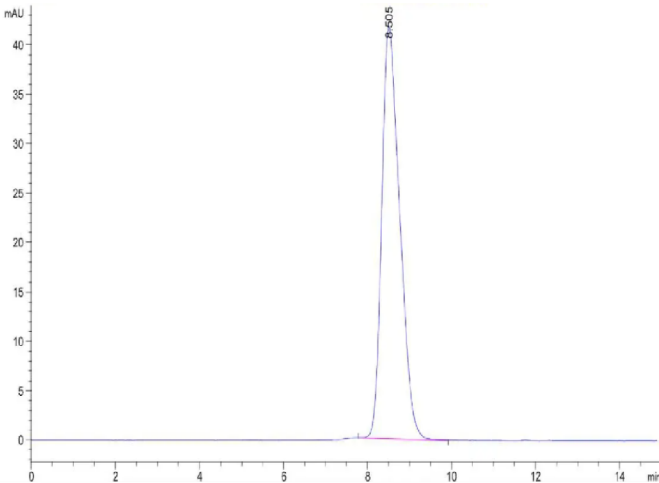
Bis-Tris PAGE



Cynomolgus IL-23R on Bis-Tris PAGE under reduced condition. The purity is greater than 95%.

SEC-HPLC

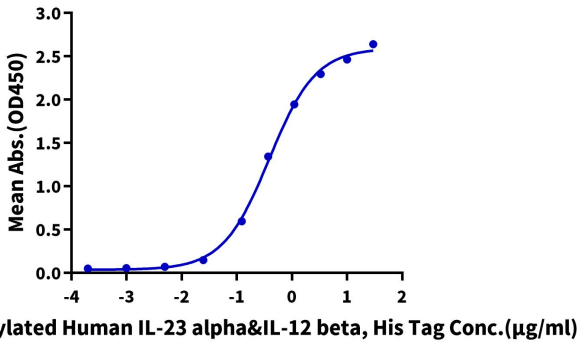
Assay Data



The purity of Cynomolgus IL-23R is greater than 95% as determined by SEC-HPLC.

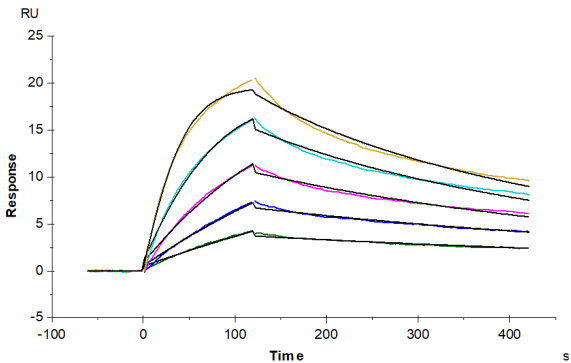
ELISA Data

Cynomolgus IL-23R, His Tag ELISA
0.5µg Cynomolgus IL-23R, His Tag Per Well



Immobilized Cynomolgus IL-23R, His Tag at 5µg/ml (100µl/well) on the plate. Dose response curve for Biotinylated Human IL-23 alpha&IL-12 beta, His Tag with the EC50 of 0.39µg/ml determined by ELISA (QC Test).

SPR Data



Cynomolgus IL-23R, His Tag immobilized on CM5 Chip can bind Cynomolgus IL-23 alpha&Mouse IL-12 beta, His Tag with an affinity constant of 3.90 nM as determined in SPR assay (Biacore T200).